

RECORDED
LARAMIE COUNTY
CHEYENNE, WY.

CERTIFIED LAND CORNER RECORDATION

87 SEP 2 AM 11 33

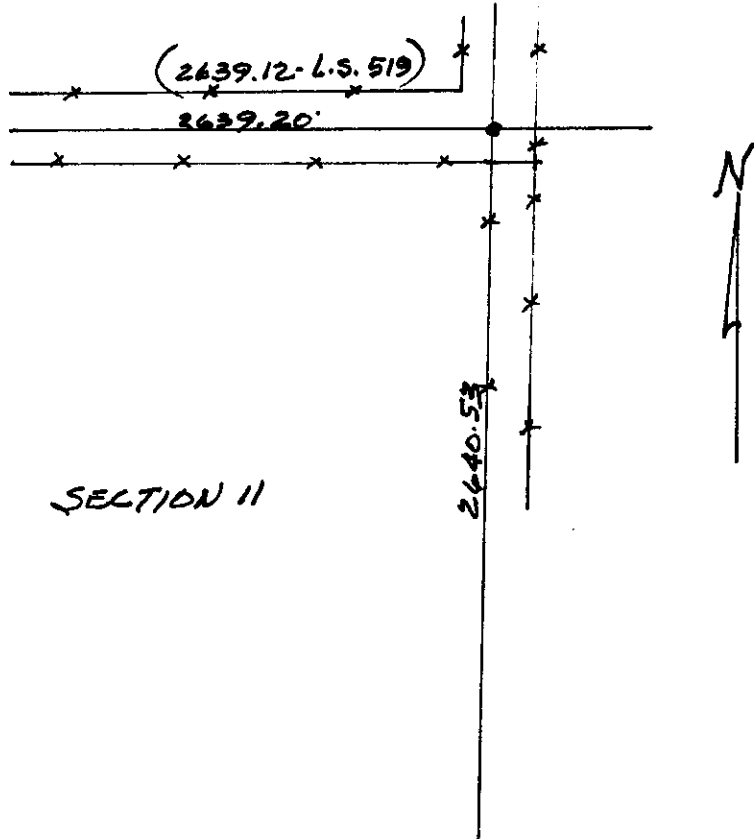
DESCRIPTION OF CORNER EVIDENCE FOUND, AND ORIGINAL RECORD (If known)

NORTHEAST CORNER SECTION 11
T. 13 N., R. 64 W.
6th P.M.
FOUND SPIKE & old stake

DESCRIPTION OF MONUMENT AND ACCESSORIES ESTABLISHED TO PERPETUATE THE ORIGINAL LOCATION OF THIS CORNER:

SET 5/8" X 18" DEBAR WITH SURVEY CAP TO REPLACE SPIKE

SKETCH, WITH COURSE AND DISTANCE TO ADJACENT CORNER IF DETERMINED IN THIS SURVEY. (May Sketch or Paste Reproduction on Reverse Side.)



I, D.M. HOPKINS certify that I have carefully performed or reviewed the work done on the diagrammed corner as reported on this recordation form and approve the same.

Donald M. Hopkins 55B
Signature of Surveyor Registration No.

STATE OF WYOMING,
Office of Clerk and Recorder,
County of Laramie

This "corner record" was filed for record on the 2 day of September, 1987, was noted on the cross-index plat and is assigned page No. _____, in book No. _____

Frank C. Whitcomb
County Official

Cross Index No. <u>E-21</u>	T. <u>13</u>	R. <u>64</u>	Mer.
_____	T. _____	R. _____	Mer.
_____	T. _____	R. _____	Mer.
_____	T. _____	R. _____	Mer.
_____	T. _____	R. _____	Mer.
_____	T. _____	R. _____	Mer.
_____	T. _____	R. _____	Mer.